



**Little Bit**  
Therapeutic Riding Center  
Dunmire Stables



**2017 Annual Report**



Little Bit Therapeutic Riding Center is a community where horses transform the bodies, minds, and spirits of people with disabilities.

**Board of Directors\* 2017**

- |                             |                   |
|-----------------------------|-------------------|
| Sally Gregg, President      | Janet M. Brown    |
| Pat McCowan, Vice President | Rob Graves        |
| Christy Hale, Secretary     | Christine Hawkins |
| Tracey Trewin, Treasurer    | John Plaisted     |

*\*In January 2018, the Board of Directors was renamed to Board of Trustees.*

## A Letter from Our President and Executive Director

In 2016, Little Bit faced challenges that seemed nearly unsurmountable. Our financial situation was dire and drastic changes needed to be made to save the organization. The Board of Directors took thoughtful, but immediate, action to make changes recommended by wise counsel. Those changes included hiring an interim executive director who could assist the staff in tightening belts, seeking areas where savings could be made, and building morale when it was low. Sue Camou did an excellent job in that role, and after stabilizing the organization, worked with the Board to find a permanent executive director.

Last May, the Board hired Paula Del Giudice. Paula brought a tremendous love of people and horses, and a passion for the work to Little Bit. In addition, she brought over 20 years of nonprofit experience having served in a wide array of nonprofit positions, both as a volunteer and paid staff.

Paula and the Board worked to establish goals and objectives that are helping Little Bit start to make the incremental growth that we promised the community when we created the plan for purchasing our current facility. It's not about growth for growth's sake. It's about filling the potential that we have to serve more individuals in the community. Our highest area of demand is for our therapy services and that's an area we are concentrating on first, to serve more patients.

Because of all of the seeds planted, 2017 was positive and productive. The staff did an amazing job of stewarding the resources allocated to them, and the new programs and new directions are beginning to pay off in terms of additional revenue. Thanks to the direction we are now heading, and the confidence our supporters have in that direction, Little Bit is now on firmer financial ground.

We are not finished yet! The demand for our therapies and services is still high and growing. We must do our best to serve those needs as best we can while being strategic and thrifty. We believe we have the pieces in place to make that happen. We will always need your moral and financial support! Thank you for your confidence in us.

Sincerely,

Sally Gregg  
Chair, Board of Trustees

Paula J. Del Giudice  
Executive Director




## Hippotherapy

Hippotherapy is a physical, occupational, or speech-language therapy treatment strategy that utilizes equine movement combined with standard techniques and strategies as part of an integrated intervention program to achieve functional outcomes. The physical therapist focuses on skill areas related to gross motor ability such as sitting, standing, and walking. The occupational therapist focuses on fine motor control, sensory integration, feeding skills, play skills, attention and self-regulation skills, and functional daily living skills. The speech-language pathologist focuses on respiratory function, breath control, oral-motor function targeting articulation, fluency, auditory processing, expressive language, receptive language, and social pragmatics.

*"My daughter, Carmel, has a severe, one-in-a-million, progressive genetic disorder that causes her to go into recurring episodes of paralysis. Since starting hippotherapy, I have seen her grow in confidence, strength, and coordination. Even on her best days her brain is working so hard to just keep her body upright. Hippotherapy has given her the will to try something new and provides her an anchor of hope for when she is fighting this cruel disorder. We are so grateful for the relationship she has developed with her horse Gigi and her Occupational Therapist Christina, and as a family we are truly grateful for the entire team at Little Bit. I am certain that Carmel will continue doing hippotherapy for a long time."*

- Sophie H., Parent

**New in 2018!**  
**Relaunching adult hippotherapy and new children's literacy therapy**

 **89**  
 patients served

 **1,617**

therapy treatments

 **2**  
 age of youngest patient

 **15**  
 age of oldest patient

**10**  
 patients met all of their treatment goals & transitioned from hippotherapy to adaptive riding



LEARN MORE AT [LITTLEBIT.ORG/THERAPY](http://LITTLEBIT.ORG/THERAPY)



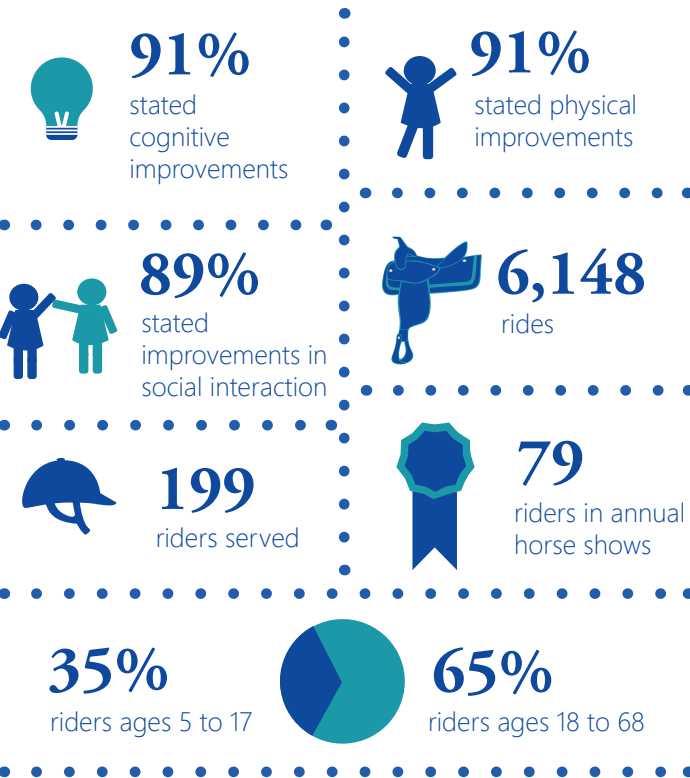
## Adaptive Riding

Adaptive Riding is recreational horseback riding lessons for individuals with special needs. The goals are riding-skill based, but individuals and parents often report many therapeutic benefits of participation. Adaptive riding lessons are taught by PATH International-certified instructors who create a wide variety of games and exercises designed to meet each student's needs. Classes include arena riding, trail rides, and group activities.

*"Down syndrome creates physical and intellectual challenges for my son Eric who began hippotherapy at Little Bit in 2001. Now 23 years old, Eric rides mostly independently. Thanks to his instructor, his horse Honey Bee, as well as long-term volunteers and classmates, Little Bit helps him maintain and build trust, confidence, physical strength, social skills, and horse care knowledge—all for his long-term growth and enrichment. I'm not sure he realizes how much exercise he's getting on the horse, and he's always super excited for his next lesson. Little Bit is a huge piece of Eric's life."*

-Beth A., Parent

**New in 2018!**  
**Special Olympics**  
**Washington's**  
**first equestrian program**



LEARN MORE AT [LITTLEBIT.ORG/ADAPTIVE](http://LITTLEBIT.ORG/ADAPTIVE)



## Annual Horse Shows



79 PARTICIPANTS

**The Pat Flynn Memorial Horse Show**, named in honor of Little Bit rider Pat Flynn, is the culmination of a year's worth of progress in Hippotherapy and Adaptive Riding and a celebration of abilities rather than disabilities.

**The Margo O'Callaghan Memorial Dressage Show**, named in honor of Little Bit rider Margo O'Callaghan, provides a venue for riders of all skill levels to compete alongside their peers and be judged on their performance alone, regardless of ability or disability.

[LEARN MORE AT LITTLEBIT.ORG/EVENTS](http://LITTLEBIT.ORG/EVENTS)

Little Bit also offers **Equine-Facilitated Learning (pictured), Unmounted Horsemanship Classes**, and **Social Skills Classes**. [LEARN MORE AT LITTLEBIT.ORG](http://LITTLEBIT.ORG)

## Equine-Facilitated Psychotherapy



48 INDIVIDUAL SESSIONS WITH CHILDREN

Through Equine-Facilitated Psychotherapy (EFP), the focus is not horsemanship or horseback riding, but rather a safe place for the client and therapist to engage in activities with a horse or horses, and use the horse(s) to help process feelings, thoughts, and reactions. Little Bit is partnering with local mental health therapists to provide EFP services at our facility. These therapists will work hand in hand with a PATH-certified Equine Specialist from the Little Bit staff.

[LEARN MORE AT LITTLEBIT.ORG/EFP](http://LITTLEBIT.ORG/EFP)

*"It's very challenging for a kid on the autism spectrum to consider someone else's feelings. His work with Skip has taught him skills that he needs for life, like controlling emotions and seeing how actions affect others, and it builds his confidence. He has to be extra observant to understand Skip's feelings—the lessons are immediate. In EFP, there is less pressure to perform because the emphasis is on the horse's actions in a beautiful, natural setting. His EFP sessions have helped him function better in the classroom—a challenging environment for anyone with autism. Just as important, he is creating memories that he'll be able to hold onto and remember when he needs them. My hope is that if he ever feels that he can't do anything well, he'll remember that he was able to manage a 1,100 pound animal and try again. I am so thankful that EFP is offered at Little Bit for it was a serendipitous fit for my son."*

—Meg S., Parent



## Camp Experiences

80 PARTICIPANTS 

Camp experiences are open to individuals with or without disabilities and include riding lessons from PATH-certified therapeutic riding instructors, assisting with grooming and tacking horses, unmounted activities with horses, games, and much more.

[LEARN MORE AT LITTLEBIT.ORG/CAMPS](https://www.littlebit.org/camps)

*"My son is neurologically complex. He can often do something once and never again or be proficient at something professionals say he doesn't have the skills to do. Speech is something that has always been a struggle. While on the backs of the Little Bit horses his speech started to come. He was motivated to say, 'walk on!' and have the horse do just that. Now at almost 10 years of age, Little Bit is one of the few places where he feels comfortable and free to try new things including speaking. He will be returning to Little Bit Summer Camp, this time with his typically developing five-year-old brother. They are both very excited to finally go to camp together! I am grateful to Little Bit for providing a unique experience they can share, despite their age and developmental differences."*

—Sarah G., Parent



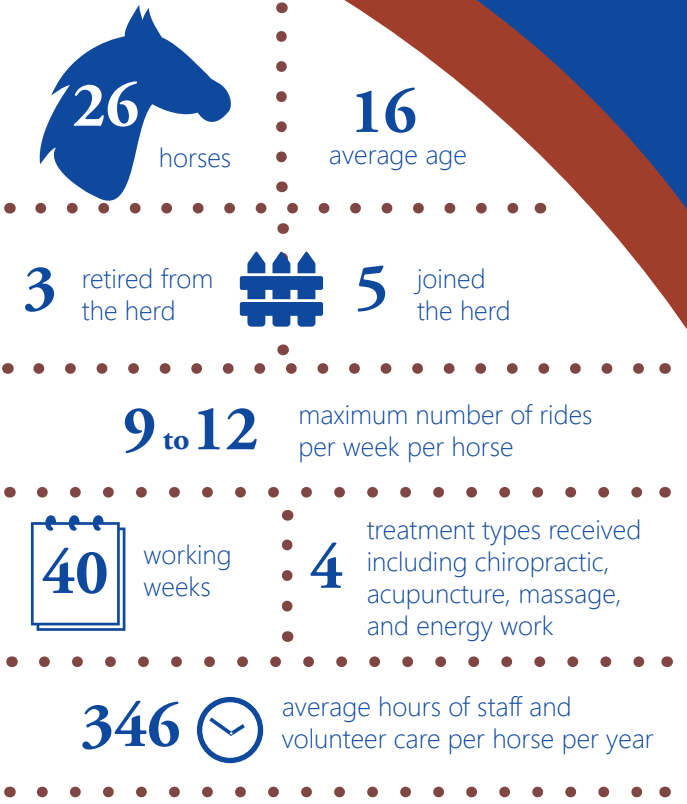
## Horses

Little Bit Therapeutic Riding Center program participants receive the highest quality services available. Our horses are a vital component and are cared for with compassion and a high level of expertise, provided by staff, veterinarians, and trained volunteers. We provide this level of care not only for the benefit of our horses' health and state of mind, but also with the knowledge that the better we care for our horses, the better they will be able to help fulfill our mission.

*"I've been volunteering at Little Bit for 12 years. To me, the horses are the reason Little Bit exists—they are the glue that holds Little Bit together, in spirit and in deed. The connection that each horse has with their rider is stronger than we often realize. Many of us were drawn in by the horses, and then we find that over time we start listening to the horses' language while learning so many things about ourselves. Therapeutic riding horses' work is very challenging, however the beautiful, individualized care they receive at Little Bit from incredibly knowledgeable staff and veterinarians could not be better."*

—Shannon S., Volunteer

**New in 2018!**  
Pasture space  
for our herd



LEARN MORE AT [LITTLEBIT.ORG/HORSES](http://LITTLEBIT.ORG/HORSES)



## Inspiration and Education

Little Bit Therapeutic Riding Center serves as an inspiration and educational resource to the therapeutic riding profession, both regionally and nationally. We accomplish this by offering clinics, seminars, and training classes throughout the year, offered to both Little Bit staff and volunteers as well as individuals from other therapeutic riding organizations and those wanting to gain qualifications to enter the therapeutic riding profession.

*"My plan was always to become a vet. While on a break from college, I accepted a position in the summer camp program at Little Bit. I completely fell in love with the mission, the people, and the horses. While finishing my degree, I spent increasingly more time at Little Bit, and my family noticed how much I was loving it. While attending the PATH Registered Level Instructor Workshop as an intern, an Evaluator said, 'I think you are perfect for this job.' That was all the validation I needed to pursue the 'world's coolest job.' After teaching hundreds of lessons since 2015, I still look forward to the clinics and workshops held at Little Bit, which remind me of how fortunate I am and drive me to do more, be more creative, and use more resources alongside learners who are driven to do the same."*

—Devon S., PATH International Certified Instructor

**New in 2018!**  
Special Olympics  
Washington Equestrian  
Program training



37 individuals attended PATH International workshops at Little Bit

31



31 individuals completed PATH International certification tests at Little Bit

16



16 individuals attended American Hippotherapy Association workshops at Little Bit

53

53 volunteer training classes

LEARN MORE AT [LITTLEBIT.ORG/CLINICS](http://LITTLEBIT.ORG/CLINICS)





## Community and Accreditations

Little Bit Therapeutic Riding Center is a community where horses transform the bodies, minds, and spirits of people with disabilities. We are tremendously grateful for the support we received from community members in 2017 and the accreditations and awards we earned while pursuing our mission.

*"My daughter has ridden at Little Bit for over 15 years. Her father and I consider this to be one of the most important aspects of Hannah's social life. We want to support her in any way we can. So, after retiring I decided to devote more time to volunteering at the Annual Reins of Life Auction. I wasn't sure how to do procurement at first, but I learned from others over the past six years and eventually became more confident and proficient. I like and respect the people on the auction committee, and I hope to be part of the team in the years to come."*

—Leah H., Parent and Volunteer

### 32<sup>nd</sup> Annual Reins of Life Auction

260 guests

**\$ 331,049**

gross raised

### Making Strides Community Luncheon

190 guests

**\$ 86,665**

gross raised



### Stinky Spoke Mountain Bike Poker Ride

**\$ 17,481** gross raised

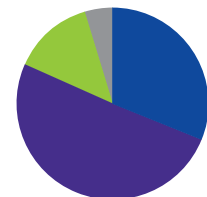


- Better Business Bureau Accredited Charity
- PATH International Premier Accredited Center
- American Hippotherapy Association, Inc. Facility Member
- PATH International Region 9 Horse of the Year **Sherman**
- PATH International Region 9 Veterinarian of the Year **Dr. Robert Fleck**
- PATH International Region 9 Volunteer of the Year **Debbie Bacon**



# 2017 Financials

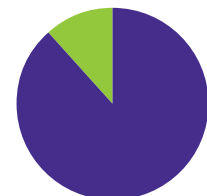
based on audited financial statements



## 2017 Revenues

Tuition & Earned Income	\$766,407
Contributions	\$1,240,716
Community Events & Activities (net)	\$339,281
Other Sources	\$114,992

**Total \$2,461,396**

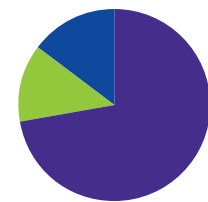


## Assets and Liabilities

at December 31, 2017

Total Assets	\$10,721,231
Total Liabilities	\$1,413,708

**Net Assets \$9,307,523**



## 2017 Expenses

Programs	\$1,649,174
Fundraising (net)	\$299,832
Administration	\$332,799

**Total \$2,281,805**

## 2017 Cost of Services

Donor Offset Participant Fee

\$238	\$120	\$175	\$65
-------	-------	-------	------

Therapy Program  
Actual Cost Per Session:  
**\$358**

Adaptive Riding Program  
Actual Cost Per Session:  
**\$240**

## 2017 Scholarships

\$52,191 to  
52 unduplicated  
participants





## 2017 Corporate Strides Award Winners

Each year, Little Bit Therapeutic Riding Center recognizes two outstanding companies and their employees for going above and beyond through volunteer service and financial support to Little Bit. We honored these companies' dedication to exceptional volunteerism, commitment, and ongoing support of the Little Bit mission.



AUE provided pro-bono services that led to the installation of a new mounting platform and ramps in one of three riding arenas, allowing Little Bit to expand class times available to riders with disabilities. In addition, AUE has provided financial support to Little Bit.



Salesforce was the top volunteer group at Little Bit in 2016, contributing 258 hours of volunteer service in addition to financial support. Volunteers laid gravel and dug trenches to ensure paddocks drain properly in the wet winter months, washed fencing for the annual horse shows, installed tractor shed panels, decorated the entire facility for the community holiday party, and more.

[LEARN MORE AT LITTLEBIT.ORG/VOLUNTEER](http://LITTLEBIT.ORG/VOLUNTEER)

## Volunteer Work Groups

Corporate and community work groups help maintain 17 acres of land and several structures and buildings at Dunmire Stables. Work groups offer Little Bit the opportunity to complete larger projects with many hands in one day's time.



*"Why spend a day at Little Bit volunteering? This is one day that I look forward to all year long. Liberty Mutual Insurance provides one day a year to give back to our community. I have been coming to Little Bit for five years now and it provides me a way to support the adults and children with mental or physical disabilities as well as their families. It is just a quick few hours individually, but when the 25 of us show up, we make a big difference in the upkeep of this large facility. Many hands do truly make quick work. Thank you to Liberty Mutual Insurance and to Little Bit for this opportunity!"*

—Susan P, Liberty Mutual Employee



## Volunteers

Little Bit was founded in 1976 by a small group of volunteers, and volunteers remain at the heart of our operation today. The time, knowledge, and passion of our volunteers allow us to achieve a level of service that would otherwise not be possible.

*"It is not an exaggeration to say that magic happens in the interaction between horse and special needs rider. For me, the ability to witness that magic is a gift. I've seen first words, first steps, and the biggest smiles ever at Little Bit, and it just keeps me coming back for more."*

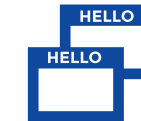
—Diane J., Volunteer since 2012

**New in 2018!**  
**Start a Little Bit**  
**volunteer guild for**  
**friendship, purpose, and fun!**



**29,711**  
 record number  
 of volunteer hours

**1,093**  
 volunteers



**302**  
 volunteers per week

**14**  
 minimum age  
 to volunteer



**83**  
 age of oldest  
 volunteer



LEARN MORE AT [LITTLEBIT.ORG/VOLUNTEER](http://LITTLEBIT.ORG/VOLUNTEER)



Wendy Lukas	Hannah McKinley	Annette Neptune	Katherine Pennance
Kathleen Lyndon	Savannah McKinnon	Kathryn Neupert	Meg Penner
Jaylynn Lyons	Pam McLaren	Joshua Newton	Hannah Perkins
Tansey Lystad	Ramya Meenakshi	Quynh My Nguyen	Cinda Peters
Alex Lytton	Sundaram	Abran Nicolas	Shelly Peterson
Natalie Lytton	Karran Mehta	Ekaterina Nikolaeva	Megan Pfohl
Linda Mackin	Shree Mehta	Nicole Nobles-Fisher	Lauren Phelps
Alexandra Madera	Alexis Meikle	Julie Notarianni	Morgan Phillips
Gail Magnuson	Grace Melone	Catherine Noyes	Lindsay Piper
Jana Magone	Sophia Merlino	Jennifer Nyerick	Lisa Pitsch
Carolyn Mahran	Kathryn Merrill	Alicia Ochs	John Plaisted
Sophie Maier	Hanna Meyer	Audrey Ochs	Brittany Plourde
Hailey Malkasian	Christopher Miller	Janice O'Connor	Olivia Polzin
Tenley Mange	David Miller	Anna Ohrt	Robert Potts
Seth Maristuen	Marie Miller	Olivia Okun	Susan Preston
Lily Marlette	Sharon Miller	Diana Olidinchuk	Terry Price
Alina Marshall	Janet Mitchell	Liliana Olidinchuk	Kim Printz
Adriana Marti	Nathan Mitchell	Victoria Olidinchuk	Maia Purdy
Jilian Martin	Viola Mitchell	Amanda Oliva	Karen Quarford
Kelly Martin	Britta Moore	Sabrina Ollestad	Jordan Quinanola
Jocelyn Masen	Andrew Morin	Diane Openiano	Brian Radabaugh
Karin Mathews	Diane Mortenson	Kylee Osowski	Loraine Ragona
Nicholas Mauser	Melissa Mudaliar	Jan Ott	Jim Rams
Ashlynn Mayberry	Stephanie Mulvey	Christina Palicka	Judy Rams
Samara Maynard	Amy Murphy	Ann Palmason	Joann Ramsby
Nduta Mbuthia	Cassidy Murphy	Cosette Parker	Tanya Randall
Debbie McConnachie	Sheyenne Murphy	Jennifer Parker	Anina Ratjen
Pat McCowan	Alyssa Navarro	Caitlynn Parpart	Dana Raugi
Mira McDermott	Kelsey Nay	Tanya Patil	Leanne Rawson
Kimberley McDonald	Adrienne Neether	Melissa Pearlstein	Bailey Reed
Emily McDorman	Christina Neff	Regina Pebles	Melanie Renk
Sharon McEnerney	Kay Nelson	Pamela Pelan	Christina Reps
Gregory McGwire	Staci Nelson	Kailli Pelzer	Ann Reynolds
Courtney McKenzie	Susan Nelson	Sophia Pelzer	David Reynolds



Kathleen Reynolds	Riley Severson	Kara Stranski	Jessica Trueman	Dawn Weller	Stella Wright
Mari Ribovick	Natalia Shabanova	Kim Streng	Emily Tsujikawa	Martin Welliver	Sheila Wyckoff-Dickey
Kathleen Ridihalgh	Chelsea Sheldon	Linda Strom	Lindsay Tsujikawa	Grace Wellman	Jenna Katherine Ann
Lindsey Rindahl	Janica Shelton	Laura Stuart	Paula Turner	Caroline Wells	Wymetalek
Roman Rivera	Erica Shepard	Marissa Suafo'a	Kristy Uddin	Elise Wells	Anika Wypyszyk
Edda Rivera Lopez	Lori Shepp	Catrena Sullivan	Grace Uhrich	Daniel Welsh	Sue Yang
Katherine Roberts	Francesca Sheppard	Kiera Sullivan	Melissa Uhrich	Julie Wen	Catherine Yin
Jessica Robertson	Jingxin Shi	Rowan Sullivan	Kelly Usher	Dena Wessel	Yu-Jin Youn
Emma Robins	Mallorie Shibley	Audrey Sutton	Tami Vargas	Kristen Westley	Megan Young
Leanne Roe	Rhea Shinde	Megan Sutton	Hannah Varghese	Anna Wetterberg	Teresa Young
Patricia Rosen	Anne Shively	Simone Sutton	Eric Verzuh	Kathleen White	Vickie Young
Jessica Rowe	Mich Short	Calie Swedberg	Kassidy Vial	Jennifer Whitener	Zoe Young
Olivia Rui	Janet Showalter	Kristine Sweeney	Kathy Vickers	Claire Whiting	Uzair Zaman
Vitoria Ruozzi	Noor Shrufi	Justyna Swierz	Akshitha Vijay	Kristi Whiton	Jennifer Zhang
Ann Rutledge	Megan Siemering	Vivian Syme	Skadi Von Reis Crooks	Catherine Wigert	Mackenzie Ziegler
Lucianne Salmick	Anna Sievers	Charlie Symmons	Natasha Vorley	Taylor Wight	Chad Zietz
Audrey Sanborn	Judy Silva	Kiya Tafoya	Sara Vowels	Kimberly Wilk	
Kathleen Sanders	Sierra Silva	Deborah Tait Lemeshko	Becky Vowels-Soliday	Shalicia Willey	
Katie Sandler	Eva Silvestrini	Catherine Taylor	Sandra Waligoski	Gena Williams	
Cassandra Sather	Stasia Simcox Matyjas	Halley Taylor	Wanda Wall	Jennifer Williamson	
Megan Sauer	Shirley Sing	Liza Taylor	Taylor Walsh	Sue Willoughby	
Victoria Savage	Kelcie Sirois	Kaytee Teichman	Katie Wang	Nicole Wilson	
Lisa Schaible	Staci Sirois	Chloe Tennison	Rachel Wang	Marilyn Windsheimer	
Melissa Schettler	Cynthia Smith	Elizabeth Thomas	Renee Wang	Halinka Wodzick	
Adriana Schilder	Gregory Smith	Kari Thompson	Kristi Waterman	Gabriela Wolf	
Beverly Schmidt	Joan Smith	Jessamyn Thuma	Michelle Watson	Lilienne Wolf	
Donald Schmidt	Kathleen Smith	Quincy Thuma	Rachel Wear	Jessica Womack	
Holly Schmidt	Sally Sonnen	Mitchell Tiglon	Mark Weatherall	Alexis Wong	
Savannah Schmidt	Polina Sota	Jane Todaro	James Joseph Weaver	Reyna Wong	
Traci Schubring	Marjan Spaander	Faye Tomlinson	Lisa Weaver	Tesia Wood	
Kamma Scott	Leslie Speed	Marta Toole	Denise Webber	Carla Woodworth	
Sheri Scott	Barbara Stafford	Tracey Trewin	Davone Wedel	Averie Wracher	
Aidan Seguine	Bailey Stewart	Andrea Trinneer	Emma Weiss	Harriett Wright	
Erika Selberg	Ryan Stouffer	Darcel Trinneer	Christine Welker	Joseph Wright	



Little Bit Therapy Riding Center | 2017 Annual Report

## Donors

### \$100,000+

Juniper Foundation

### \$50,000-\$99,999

Chap & Eve Alvord  
Jordan Fund  
Microsoft Matching  
Gifts

### \$25,000-\$49,999

Anonymous  
Elias & Karyl Alvord  
Archbright Health and  
Wellness Fund  
Karol Flynn Estate  
Not Yet Foundation  
The Barbara & William  
Rosenthal Family  
Foundation  
The May & Stanley  
Smith Charitable Trust

### \$10,000-\$24,999

Eric & Luann Berman  
Darren & Catherine  
Cline  
Community Foundation  
of Snohomish County

Dennis & Priscilla  
Dickert  
Phyllis Dumire  
Garneau-Nicon Family  
Foundation  
Jerry & Sally Gregg  
Peter Gregory  
Gerald & Lena Hirschler  
Hirschler

Manufacturing, Inc.  
Scott & Kelli Imlay  
Norma Kruger  
Medina Foundation  
Nadella Family Trust  
Nordstrom  
Redmond Firefighters  
Benevolent Fund  
The Josephine Stedem  
Scripps Foundation  
Daryl & Samia Staehle  
James & Barbara  
Stafford  
Stinky Spoke  
Foundation  
Todd & Tracey Trewin  
Pat & Lori Wiley  
Wockner Foundation

### \$5,000-\$9,999

Anonymous (85 gifts)  
William Goe & Kathy  
Alm  
American Quarter  
Horse Foundation  
Beardsley Family  
Foundation  
Boeing Employees  
Community Fund  
John & Janet Brown  
Crane Fund for Widows  
and Children  
William & Robbi  
Denman  
Eastside Community  
Aid Thrift Shop  
Amy Fouke  
Donna Frisk  
GLY Construction  
Robert & Jennifer  
Graves  
Greater Houston Golf  
Charity  
Ted & Jodi Herb  
Jennifer Hisrich  
Scott Cameron &  
Jennifer Johnsen-  
Cameron

Philippe & Juliet  
LeDorze  
Helen Logan-Schneider  
Keith & Mary Kay  
McCaw Family  
Foundation  
William & Sally Neukom  
John & Kelly Olerud  
David & Trudi Pearce  
John & Kamala Plaisted  
The Reed Foundation,  
Inc.  
The Rite Aid  
Foundation  
Matthew & Kristine  
Sweeney  
The Swinerton  
Foundation  
Jim & Nancy Thomson  
Trilogy for Kids  
Gary & Wanda Walsh  
Private Foundation

### \$2,500-\$4,999

Jim & Annette Alling  
Chris Padden & Averill  
Aubrey  
Joan Bateman  
Greg Burgess  
Kevin Buzitis

Randall & Jane Chapin  
Robert & Joanne Clash  
John & Karen Culver  
Davis Wright Tremaine  
Gail De Imus  
Randy & Kimberly  
Droppert  
Scott Kruse & Cathie  
Farrington  
Michael & Amanda  
Gaberman  
Jim & Margie Giuntini  
Giuntini Family  
Charitable  
Foundation  
glassybaby White Light  
Fund  
HomeStreet Bank  
Patty Hughes  
Dawn Jasper  
John L. Scott Inc.  
Foundation  
Scott & Diane Johnson  
Kurt & Janet Jones  
Annette Merrill  
Suzanne Michael  
Chris Browne &  
Stephanie Mulvey  
Michael & Tammy Pixley  
Mike & Wendy Popke

Brian Unsderfer &  
Gloria Ramirez  
James & Judy Rams  
Darren & Anne Shakib  
Luke Stambaugh &  
Denni Shefrin  
Daniel & Colleen Shelby  
Erica Shepard  
Joel & Beth Stinson  
Linda Strom  
Corom & Wendy  
Thompson  
Leslie Thurston  
George & Jane Todaro  
Tulalip Tribes Charitable  
Contributions  
Kathleen White  
Preston Steifel & Sara  
Wiley

### \$1,000-\$2,499

Anonymous (two gifts)  
Allied Christian  
Foundation  
Armour Unsderfer  
Engineering  
Julee Bennett  
Craig & Aissa Bomben  
Phil & Caren Brown

**\$1,000-\$2,499***(cont.)*

Mark Arrant & Sue Camou  
 Scott & Beth Campbell  
 Gary & Gregoriann Hanna Carlberg  
 Carney Badley  
 Spellman, P.S.  
 Bernard & Judy Casey  
 The Columbia Foundation  
 M.E. Conger  
 Construction Dispute Resolution, Inc.  
 Paula J. Del Giudice  
 Expedia Inc.  
 Tyson & Yilu Shi Farmer  
 Richard & Angela Finlay  
 Mike & Marty Flood  
 Chris & Olivia Fong  
 Mike & Karen Funis  
 Galiotto Family Foundation  
 Katharyn Alvord Gerlich Family Fund  
 Lynn and Bruce Gibson Fund  
 Jason & Alisha Gill  
 Martin & Julia Goldstein  
 Google Inc.  
 Olympia Granger  
 Bruce & Karen Haldors

John Ensley & Christy Hale  
 John Kuhlmann & Leah Hall  
 Anne Hamilton  
 David & Judy Hayward  
 Susan Heath  
 Heed Foundation  
 Sherry Hoffman  
 Dan and Irene Hunter Fund  
 Carol Inukai  
 CR & Rosa Johnson  
 Bruce & Joanne Jones  
 Jeremy Jones  
 Jones Family Foundation  
 Kathleen Kelly  
 Meredith Kenyon  
 Tom & Annette Kleven  
 Glen & Cheri Knutson  
 Pete Belouskas & Jill Lewis  
 George & Nancy Lobisser  
 Loomis Foundation  
 John & Debbie Love  
 Wendy Lunardi  
 Patricia McCowan  
 Hugh & Mary McLoone  
 Wayne & Adina Miller  
 Steve Blew & Mary-Lou Misrahy

William & Emily Montgomery  
 Greg & Val Nelson  
 Richard Dang & Lan Nguyen  
 Nintendo of America, Inc.  
 Northwest Center  
 Northwest Electric & Solar  
 Catherine Noyes  
 John & Lynda Olerud  
 Thomas & Johanna Padilla  
 Mark & Debra Perry  
 Trang Pham  
 MacKenzie Phillips  
 Ann Pierson  
 Chip Porter  
 Jeff & Tricia Pratt  
 Puget Sound Energy Foundation  
 Sandi Rafchiek  
 Redmond Lacrosse Club  
 Redmond Rotary Foundation  
 Richard & Colleen Rickman  
 Tanya Riebeling  
 Don & Bonnie Romain  
 Salesforce.com Foundation

Donald & Beverly Schmidt  
 Schuler Family Foundation  
 Patrick & Dianne Schultheis  
 Seattle Children's Hospital  
 Nancy Shriver  
 Dorothy Simpson  
 Special People in Need  
 Peter & Carol Stewart  
 Duane Reed & Suzanne Strom-Reed  
 Wei Chen & Xin Sun  
 Swinerton Builders  
 Eva Terry  
 Thacher Family  
 Philanthropy  
 Neil & Patricia Thorlakson  
 Elizabeth Tidyman  
 Tom & Lesley Todaro  
 UBS  
 United Way Snohomish County  
 Sara Vowels  
 Washington Business Services, LLC  
 Richy & Shannon West  
 Scott White  
 Lish & Barbara Whitson

Windermere Real Estate/Bellevue Commons Inc.  
 John & Beth Wojick  
 Jason Zions

**\$1-\$999**  
 Anonymous (three gifts)  
 Christopher & Megan Adams  
 Kenneth & Linda Adkins  
 Gary & Leslie Adsit  
 Agiliant  
 William & Rondi Ahlgrim  
 Kristal Albertson  
 Michelle Alexander  
 Carol J. Allen  
 Cynthia Allen  
 Alliance Nursing  
 Helen Allmandinger  
 AmazonSmile Foundation  
 John Owen & Joan Andersen  
 Lindsay Andersen  
 Hilary Anderson  
 Patrick & Colleen Andreotti  
 Jeffrey & Elizabeth Angelo  
 Adam Arlan

Bill & Michelle Armour  
 Karyn Arntzen  
 David & Christine Aronson  
 Ben & Barbara Aspen  
 Dani Astbury  
 John & Merritt Atwood  
 Barbara Avery  
 Debbie Aylott  
 Robert & Debbie Bacon  
 Bill & Judi Badgley  
 Jim Badgley  
 Thomas Bailey  
 Rebecca Baker  
 Nancy Baldwin  
 Jami Balint  
 Joe & Lynn Baratto  
 Margie Baratto  
 Jeff & Stephanie Barnes  
 Roger Tucker & Rebecca Barnett  
 Jessica Barrett  
 Brenda Bartlett  
 Brandelyn & James Bates  
 Suzie Bauer  
 John & Linda Beatty  
 Ella Belenko  
 Bellevue Rare Coins  
 Michelle Bennett  
 Jenner Benton  
 Tove Berg  
 Mark & Patti Beringer  
 Parker Berman

Kevin & Debbie Berry  
 John Bingham  
 David Blanchat  
 Kenneth & Jan Block  
 Emily Hopkins & Margaret Blume  
 Gary & Linda Blume  
 Adam & Amanda Bocik  
 James & Serena Boehmer  
 Bill & Carol Anne Boone  
 Lisa Borders  
 Peter Bower  
 Bill & Marci Bowker  
 Katherine Boyd  
 Andrew Bradder  
 Douglas & Yvonne Bradeen  
 Gerald & Virginia Brandmeier  
 Jeff & Carolyn Brandmeier  
 Karen Brandvick  
 Lee & Sara Brashear  
 Alyce Bredehoeft  
 Neil Bretvick  
 Brenda Breuer  
 Bill & Cindy Brockhaus  
 Edward & Henriette Broeder  
 Jeffrey & Deborah Budd  
 Travis Burke  
 Alison Burrell

Doris Burrell  
 Kay Burrell  
 Alexandra Buscher  
 Margot Cahill  
 Sheila Callahan  
 Stephanie Cameron  
 Bob & Lori Cappelletti  
 Elizabeth Cardwell  
 Nancy Carlstrom  
 Cascade Dafo Inc.  
 Tom Galambos & Megan Casey  
 Doug & Gerri Caswell  
 Dave Catlett  
 Jennifer Caudebec  
 Scott Causbie  
 David & Jeanne Cerino  
 Bill Chafin  
 Aravinda & Priya Chakravarti  
 Vikram Chalana  
 Champion Metal of Washington  
 Halley Chang  
 Evanna Charlot  
 Dina Charlton  
 Carl & Rebecca Chatfield  
 Alice Cheung  
 Thomas Chirichigno  
 Ana Christensen  
 Susan Chua  
 Dean & Shervin Churchill

Cinq Cellars LLC  
 Tracy Cioffi  
 City of Seattle  
 Employee Giving  
 Blaine Clark  
 Gregory & Janice Clarke  
 Whitney Clibborn-Anderson  
 David & Shannon Cochran  
 Andrew Cole  
 David Cole  
 Lya Colman  
 Combined Federal Campaign  
 Gretchen Compston  
 Patricia Conover  
 Paco Contreras Herrera  
 Emma Coopersmith  
 Jacob Glenn Carr & Nancy Corradini  
 Costco Matching Gifts  
 Denis & Susan Couch  
 Susan Coulter  
 Maureen Cowan  
 Todd Cowles  
 Jeni Craswell  
 Tracy & Erin Cuda  
 Crissa Cugini  
 Dawn Cunningham  
 Melissa Cunningham  
 Stefani Cushing  
 Haley Custer

Debra Dane  
 Stephen & Karen Daniel  
 Aubrey Daniels  
 Taryn Darling Hill  
 Cynthia Dasté  
 Gina Davidson  
 Jeremy Davidson  
 Tim & Val Davies  
 Christine Davis  
 Timothy Davis  
 Mike & Tina Dawson  
 Monica Day  
 Sue Deatley  
 Mike & Cathy Delaney  
 Del's Truck Rental  
 Claudia DeMarco  
 Lauryl Denega  
 Howard Denner  
 TJ Devine  
 Karen D'Ewart  
 Greg Smith & Karen Deyerle  
 Stacey Dias  
 Emily Dickert  
 Timothy & Lisa Diller  
 DMC  
 Cindy Donner  
 Susan Dossett  
 Mary Downing  
 Darren & Nicole Dresser  
 Kevin Drew  
 Marc & Beth Droppert  
 Caihua Du

Tom & Martha Duhamel  
 Melinda Dumadag  
 Patrick Dunn  
 Sabine Duvall  
 Don Eagle  
 Kathy Early  
 Eastside Catholic Options Program  
 Stacy Edlund  
 Joyce Ellis  
 Julie Elmuccio  
 Encana Corporation  
 Cindi Engelhardt  
 Edwin Paraguya & Aurora Enrico-Paraguya  
 Susan Entenmann  
 Yvonne Evanoff  
 Marilyn Evans  
 Daniel & Teresa Evered  
 Lauren Everson  
 Jim & Joann Fairo  
 Gene Farrell  
 Tim & Katie Farrell  
 William & Carol Felton  
 Michael & Mary Ellen Ferguson  
 Tracey Ferriss  
 Joseph & Carol Fielding  
 Laura Fielding  
 Rebecca Fine  
 Theodore & Maggie Finley

Firstgiving  
 Lacy Fitzpatrick  
 Jon & Shannon Flora  
 Royla Forest  
 Cameron & Carlyn Forrest  
 Bob Forsberg  
 Heather Forte  
 Jessica Fosse  
 Maurice Franklin  
 John & Kathryn Freitas  
 Marion Froehlich  
 Krista Fuller  
 James & Deborah Fullerton  
 G.E Gordon, Inc.  
 Lisa Gaan  
 Thomas Gallacher  
 Einat & Roei Ganzarski  
 Hannah Gardner  
 Mary Gardner  
 Alison Garrison  
 Bill & Melinda Gates Foundation  
 Bill & Melinda Gates Foundation Matching Gifts Program  
 William Gates  
 Michael Gaudio  
 Julie Gauntt  
 GE Foundation  
 George Mastrodonato & Susanne Gee  
 GeoEngineers Inc.



Aaron George  
Bud & Miriam Gesell  
Getty Jewellers  
Julie Ginesi  
Dirk Glessner  
Tina Goedde  
Cassidy Goeden  
Golden Wings 4-H Club  
Meliny Gonzalez  
Bryan Goode  
Joe Rapp & Mary Goodwin  
Allison Gordon  
Jon & Rachel Gouras  
Robert & Linda Graves  
Pamela Gray  
Mark & Jean Greaves  
Cecil & Paulette Green  
Natalie Green  
Julie Greenberg  
Dave & Dianne Greene  
Susan Greenwald  
Abby Gregory  
Mark Gregory  
George Buswell & Kerri Griffin  
James & Erin Griffith  
John Michael & Mayten Gross  
George & Lynn Guttmann  
Julie Habegger  
Alex & Kathleen Habliston

Barbara Hagel  
Ashley & Kevin Hagwell  
Judi Hahnel  
Jacqui Haist  
Jeremy Hajicek  
Doug & Sarah Halbert  
Roger Hales  
Melissa Jane Mishko & Suzanne Hall  
Mary Jane Halvorson  
Jim & Kathleen Hamlin  
Fred & Sydney Hammerquist  
Carole Hamstra  
Barrie Handy  
Keenan Hanes  
Ted Granger & Sandra Hankins  
Judy Hannah  
Martha Hanscom  
Jerry & Victoria Harbottle  
Alexandra Harding  
Chris Hardman  
Thomas Hardy  
Harmonia Ventures LLC  
Danielle Harper  
Michael & Renee Harris  
Jeramy Harstad  
Amy Hart  
Erin & Christopher Harth  
David Hastie  
Karen Hatch

Dave & Kim Hatcher  
Georgia Havens  
Matt Gregory & Christine Hawkins  
Lisa Hayward-England  
Russell & Cindy Hazzard  
Scott Hedgcock  
Hellam, Varon & Co.  
Jeremy Hemsworth  
Steve Henderson  
Kate Herz  
Tina Higley  
Kelly & Leann Hill  
Frank & Abigail Hodge  
Ingela Hoerler  
Teresa Hollenbeck  
Catharine Holtan  
Jennifer Hood  
Megan Hooker  
Barton & Karin House  
Howard/Mandville Gallery  
Travis & Blair Howland  
William & Christine Hoxsey  
Tina Hsu  
Dave & Kelly Hudgins  
Josephine Hudson  
Marsha Hughes  
Amelia Hull  
Karen Hunter  
Jack & Deborah Hurley  
Rose Hurley

Lynnette Husted  
Mckay & Sabath Huttle  
IBM Employee Services Center  
Ashanka Iddya  
Paul Isenburg  
Charlese Jackson  
Andrew Jacobson  
Japan International Tours  
Therese Jardine  
Scott Jeffus  
Paula Jellison  
Tricia & Paul Jerue  
Jane Jessen  
Ginny Johnson  
Jeff Johnson  
Jennifer Johnson  
Robbie & Kara Johnson  
Kristine Jolma  
Bruce & Joanne Jones  
Jack & Gloria Kountz  
Stephanie Krantz  
Cheryl Kringle  
Kroger  
Erica Krokos  
Robin Krueger  
Haylie & Natalie Kuehn  
Richard & Julie Kuehn  
Alice Kurz  
Kutting Edge Fitness, LLC  
Ryan & Melissa Kelley  
Barbara Kelly  
Jo Ann Kelly  
Joan Kelly

Craig & Karen Kennedy  
Julien Kern  
Debra Kerth  
Keri Kiefer  
Sang Soo & Kyoung Kim  
Kevin Kincaid  
Virginia King  
King County Employee Giving Programs  
Candi Kintzley  
Eric Verzuh & Marlene Kissler  
Lindsey Klaff  
Dale & Jayna Klatzker  
Aurelia Kloosterhof  
Penny Kniffen  
Saryn & Cathy Koch  
Suzanne Kohl  
Sarah Kohloff  
Jack & Gloria Kountz  
Stephanie Krantz  
Cheryl Kringle  
Kroger  
Erica Krokos  
Robin Krueger  
Haylie & Natalie Kuehn  
Richard & Julie Kuehn  
Alice Kurz  
Kutting Edge Fitness, LLC  
Ryan & Melissa Kelley  
Barbara Kelly  
Jo Ann Kelly  
Joan Kelly

Dana Landry  
Haeli Landry-Evans  
Sara Lanis  
Judith Lanou  
Karri Lapin  
Jeppe Larsen  
Shelly Laukitis  
Zita Mazzola  
Emily Lawrence  
Paulette Lemon  
Leonard & Caroline Lepiane  
Kristina Leslie  
Jean LeTellier  
Johannah Liberto  
Liberty Mutual Insurance  
Virginia Lindsey  
Elle Lo  
Lisa Loboduk  
Bob Klug & Linda Lockwood  
Christopher Lorton  
Gary Ly  
Bill & Ginny Lynch  
Abby Lyon  
Macy's East  
Amanda Madorno  
Gary Sweeting & Yue Mao  
Rolly Mariano  
Marsh & McLennan Companies  
Marsh USA Inc.

Johnson Marshall  
Maria Marshall  
Larry & Marsha Martin  
Molly Martin  
Susan Martin  
Samara Maynard  
N. Lynn Mazer  
Lori Lavigne  
McCleary Oil Company  
M.T. McDermott  
Charles McDonald  
Ben McKenzie  
John Kelly & Courtney McKenzie  
Katie McKenzie  
Steve & Jessica McKenzie  
David & Connie McLean  
Mary Ann McLean  
Benjamin McNutt  
Doug & Thelma McTavish  
Matt & Bobbie Medlin  
Akta Mehta  
Karen Melanson  
Steven Baldwin & Mayra Melka-Baldwin  
Meg Mendlin  
George & Lois Meng  
Clint Merriman  
Michael & Ruth Meyers  
Adrienne Miller  
Bettylu Miller

David & Kristin Miller  
Jeffrey Miller  
Pete Miller  
Pi & Beverly Miller  
Rick Miller  
Glen & Alison Milliman  
Donald Miller & Susan Miner  
Allen & Kristin Minner  
Mark Mobilia  
Clare Moe  
Douglas Montague  
Melissa Mordy  
Mindy Morgan  
Morgan Stanley  
Linda Morris  
Tracy Morris  
Kassie Morton  
Andrew Moskowitz  
MOZ  
Steve & Paige Mulvey  
Jeff Whitlach & Joan Myers  
Stephanie Mylenski  
L. N.  
Doug Portelance & Sharyn Nagasawa  
Mike & Irene Nash  
Michael Navarro  
Gerald Nelson  
Jenean & Russell Nelson  
Dorothy Neville  
Noel Nishi

Paul & Teresita O'Beirne  
Catherine Oberg  
Andy Ochs  
Michael L. Johnson & Joy Okazaki  
Jessica Olerud  
Fred & Robin Marie Olheiser  
Brandon Oliver  
Kim Olmstead  
Kathy Olsen  
Lauri Olson  
Raymond O'Neal  
Alex O'Neill  
Anne O'Rourke  
Chris & Vicki Ottesen  
Steve & Billie Otto  
Erin Packard  
Lauren Padden  
Andrew Moskowitz  
MOZ  
Steve & Paige Mulvey  
Jeff Whitlach & Joan Myers  
Stephanie Mylenski  
L. N.  
Doug Portelance & Sharyn Nagasawa  
Mike & Irene Nash  
Michael Navarro  
Gerald Nelson  
Jenean & Russell Nelson  
Dorothy Neville  
Noel Nishi

Mark Phair  
Zaiga Phillips  
Danielle Plant  
Meredith Pokorny  
Paul Gross & Lori Poliski  
Alan Pope  
POSaBIT, Inc.  
Nadia Postupna  
Susan Preston  
Tammy Preuss  
Matt & Lisa Quinn  
Jeff & Julie Raab  
Lauren Ragen  
Mary Ragen  
Rainland Farms Equine Clinic  
Jodie Ramey  
Luis Ramirez  
Ed Ramsey  
Kay Reagan  
Susan Parker  
Cheryl Parmele  
Melissa Pearlstein  
Kim & Alison Pearse  
Lars Pedersen  
Deb Peet-Walker  
Ethan & Melissa Pendleton  
Sheila & Ron Pera  
Shelly Peterson  
Karrol Peterson-Gardiner  
Cynthia & Roger Petrie  
Christopher Pfaff

Sabrina Rischer  
David Roberts  
Lynn Roberts  
Deenie Robertson  
Craig & Laura Robinson  
Ian Robinson  
Missy Ross  
Katie Rossmessl  
Stephen & Elizabeth Rummage  
Lance Rummel  
Salesforce.org  
Mary Sanden  
Martin Schager  
Tom & Melody Scherting  
Jeffrey Siddons & Mary Schlosser  
Michaela Schmidt-Le Schmitt  
Richard & Dabney Schmitt  
Angela Schnell  
Jim & Nancy Schoeggli  
Robert & Audrey Schroeder  
Jeff & Cindy Schwartz  
Robert & Audrey Seale  
Brian Sears  
Steve & Gena Sears  
Seattle International Beer Festival  
Matt & Julie Richardson  
Bob & S. Lawson Sebris  
Kamaile Sedeno  
Heather Sellers

Susan Shaver  
Gay Shaw  
Chelsea Sheldon  
Jim & Sue Shellooe  
Cindy Shepard  
Janis Shepard  
Lindsay Shepard  
Lori Shepp  
Robert & Karen Sheppard  
Bill & Nancy Sherertz  
Sarah Sherertz Vogt  
Mallorie Shibley  
Walter & Shannon Shields  
Theresa & Gary Shipe  
Maureen Short  
Michiko Short  
Ron Ingraham & Karin Shuey  
Sharon Silverstone  
Steve & Suan Simon  
Judy Simonson  
Stephani Siudmak  
Moya Skillman  
Mason Skinner  
Cameron Slade  
Lisa Slobjanov  
Ilya Smirnov  
Esther Smith  
Smitty Smith  
Terri Smith  
Patrick & Audra Snijders  
Shelli Soble

**\$1-\$999 (cont.)**

Kurt & Sharon Soldenwagner  
Mark Sollenberger  
Steve Albright & Karol Solomon  
Sarah Spearman  
Harold Speer  
STRC Spirit Therapeutic Riding Center  
Brent & Michelle Spore  
Stuart & Carla Squires  
Angela Stan  
Lori Standish  
State of Washington Employee Giving  
Kay Stelter  
Todd Stevenson  
Bruce & Mary Stevenson Foundation  
Ronald Stimbert  
Stacey Stoutt  
Zee Straight-Weiss  
Connie Streifling  
Sally Stuart  
William & Karen Stuht  
Kristy Summers  
George & Kim Suyama  
Terri Suzuki  
Geoff & Cindy Swanson  
Catherine Swedberg  
Steph Swenson

Keith & Stephanie Szot  
Morris Tacy  
Kristin Tarabochia  
Lauren Tatalick  
Alanna Taylor  
GW & CR Taylor Revocable Trust  
Sameer & Farhat Tejani  
Tim & Barbara Thieme  
Mark Thomas  
Robert & Nell Thompson  
Dave & Joan Thorson  
Thurston Charitable Foundation  
T-Mobile  
Ryan Todd  
Heather Tonn  
Andrea Torland  
Kristina Trask  
Christopher & Nicola Traudt  
Glennnda Trewin-Cartner  
Elizabeth Trinidad  
Thomas & Heather Tucker  
Karen Turley  
Charlene Turner  
Jimison Turpin  
Brian & Melissa Tyler  
Ryan Tyler  
Jane Tyrrell

UBS Business Solutions US LLC  
Bruce & Christiane Ulness  
Mike & Juleen Vache  
Glenn & Bobbie Vail  
Gabriel Valdez Malpartida  
Peggy & David Van Berkem  
Terri Van Brunt  
Paulo Cesar Janotti & Gisali Vardas  
OT & Stephanie Viramontes  
Robert Viramontes  
Angela Vogel  
Marla Volpe  
Brent Wagar  
David & Joyce Anne Wagar  
Mark & Janine Wagar  
Pascal Walschots  
Rachel Warner  
Washington State Employees Combined Fund  
Michelle Watson  
Robert & Diana Weede  
Lynette Weick  
Terri Wells  
Gerald & Anne Weltner  
Timothy & Julie Wen

Lizella West  
Nathan Wetmore  
Anna Wetterberg  
Tiffany Weymouth  
Diane Whiffen  
Jan Whittington  
Kevin & Brianna Wickersham  
Gerald & Margaret Wiese  
Bill & Sheryl Wilkins  
Sue Willoughby  
Naho Wills  
Harry & Barbara Wilson  
James & Dana Wilson  
Curtis Young & Marilyn Windsheimer  
Maria Winter  
Donna Withers  
Allyn & Linda Woerman  
Mark & Dolly Woerman  
Scott Woerman  
Sean Woerman  
Joel Wolfe  
Edith Wolff  
Stephen Wood  
Chris & Connie Woodard  
Steven & Gerry Woodman  
Carla Woodworth  
Jeff VanWingerden & Brittany Worley

Deb Zaha  
Jim Zahka  
Pauline Zeestraten  
Jennifer Zhang  
Anthony Zullo  
Sandra Zumbach

**SPONSOR A HORSE**

Anonymous  
Elias & Karyl Alvord  
Beardsley Family Foundation  
Randall & Jane Chapin  
M.E. Conger  
Phyllis Dunmire  
Eastside Community Aid Thrift Shop  
Amy Fouke  
Friends of Ana  
Mary Jane Halvorson  
Scott & Kelli Imlay  
Annette Merrill  
Microsoft Matching Gifts  
Not Yet Foundation  
Redmond Firefighters Benevolent Fund

Donald & Beverly Schmidt  
Robert & Audrey Seale  
Mallorie Shibley  
Esther Smith  
Matthew & Kristine Sweeney  
Wendy Thompson  
Todd & Tracey Trewin  
David & Peggy Van Berkem  
Gary & Wanda Walsh  
Private Foundation  
Andrew & Jean Zinsmeyer

[LEARN MORE AT LITTLEBIT.ORG/SPONSOR-A-HORSE](http://LITTLEBIT.ORG/SPONSOR-A-HORSE)

**IN HONOR/MEMORY OF**

Whether for a birthday, holiday, or memory of a loved one, gifts given in honor or in memory of an individual are a wonderful way to show your love and respect.

**IN HONOR OF**

Gary & Leslie Adsit in honor of Jennifer Ottesen  
Helen Allmandinger in honor of Rob & Emma Graves  
Anonymous in honor of Our Friends at Phoenix Farms  
Gerald & Virginia Brandmeier in honor of Maria Wagar  
Greg Burgess in recognition of the commitment of Emily Burgess  
Stefani Cushing in honor of Laura Hope Minner  
Jeremy Davidson in honor of Xander Pearce-Brooks  
Tim & Val Davies in honor of Helen Logan Schneider

Paula J. Del Giudice in honor of all our team who loves Little Bit so much!  
Megan Hooker in honor of Sally Gregg  
Suzanne Kohl in honor of the birthday wish of Nadine Kohl  
Richard & Julie Kuehn in honor of Jacob Kuehn  
N. Lynn Mazer in honor of my darling calico kitty  
Mary Ann McLean in honor of Graham Thomson  
Meg Mendlin in honor of Emily Baron  
Michael & Ruth Meyers in honor of Grace  
David & Trudi Pearce in honor of Maxwell Anderson

David & Trudi Pearce in honor of Xander Pearce-Brooks  
Kay Reagan in honor of Xander Pearce-Brooks  
Asa Reed in honor of Lacey Reed  
Sherry Rind in honor of Martin Welliver  
Lynn Roberts in honor of Maxwell Anderson  
Lynn Roberts in honor of Xander Pearce-Brooks  
Richard & Dabney Schmitt in honor of Xander Pearce-Brooks  
Bill & Nancy Sherertz in honor of Becky Sherertz  
Duane Reed & Suzanne Strom-Reed in honor of Oliver Burks

Elizabeth Tidyman in honor of Paula Del Giudice  
David & Peggy Van Berkem in honor of Skip  
Allyn & Linda Woerman in honor of Dolly Woerman  
Sean Woerman in honor of Aunt Dolly Woerman  
Jason Zions in honor of Becca Zions

**IN MEMORY OF**

Anonymous in memory of Jean Lunstead  
Doris Burrell in memory of Karol Flynn  
Kay Burrell in memory of Karol Flynn  
Timothy Davis in memory of Ann Gray, mother of Alyce Bredehoeft

Lacy Fitzpatrick in memory of Ann Gray  
Royle Forest in memory of Oscar  
Ted Granger & Sandra Hankins in memory of Susan Shecket  
Richard & Julie Kuehn in memory of Don Lord  
Guy & Sue Lamoree in memory of Mary Hutchinson  
Liberty Mutual Insurance in memory of Keira Thieme  
M.T. McDermott in memory of Michael Luster  
Elizabeth O'Callaghan in memory of Margo O'Callaghan  
Fred & Robin Marie Olheiser in memory of Richard Blanchat

Kim & Alison Pearse in memory of Leo Pearse  
Maureen Short in memory of Georgia Newton  
Shelli Soble in memory of Marilyn Soble  
Tim & Barbara Thieme in memory of Keira Thieme  
Charlene Turner in memory of Ann Gray, mother of Alyce Bredehoeft  
David & Peggy Van Berkem in memory of Karol Flynn  
Terri Van Brunt in memory of Keira Thieme  
Harry & Barbara Wilson in memory of Peter Wehrle

## IN KIND

Anonymous  
Cindy Alberti  
Maria Allen  
Elias & Karyl Alvord  
Anthony's Restaurants  
David & Christine Aronson  
Keri Bailey  
Balanced Horse Veterinary Service, PLLC  
Grace Baldwin  
Margie Baratto  
Peter & Sandra Barlow  
Joan Bateman  
Anita Bean  
Mitch Beaton  
Dan Bechtol  
Nick Beerman  
Melissa Bell  
Eric & Luann Berman  
Liz Bohlin  
Jackie Boreson  
Kelly Brask  
Daryl Brooke  
Shannon Brown  
Wendy Burroughs  
Margot Cahill  
Teri Carpentier  
Cashel Company

Cheryl [last name unknown]  
Arne Ness & Anne Christensen  
Clark Nuber  
Darren & Catherine Cline  
Laurie Coe  
Lisa Cohen  
Andrew Cole  
Lori De Marre  
Lynn Dicus  
Dressage Dancers  
Kim Duddy  
Tammy Dunn  
Eastside Catholic High School  
Eastside Community Aid Thrift Shop  
Jeffrey Coopersmith & Lisa Erlanger  
Fire Elk Enterprises  
Thomas Forsyth  
Amy Fouke  
Patty Fuchs  
Tammy Fung  
Daniel Kress & Patty Glick  
Rose Gordon  
John Michael & Mayten Gross

John Kuhlman & Leah Hall  
Martha Hanscom  
Linda Heard  
Linda Heffernan  
Sugandh Mehta & Beatrice Hewitt  
Frances Hill  
Robert & JoAnna Hollman  
Pamela Houghton  
Judy Hruby  
Gavin & Tari Jancke  
Jess [last name unknown]  
Luke Kaker  
John & Cathy Kaschko  
Katherine [last name unknown]  
Keep It Simple Farm  
Phyllis Keller  
Anne Kennedy  
Debra Kerth  
Katherine Kitzmiller  
Kiwanis Club of Issaquah Valley  
Nicole Kramer  
Nancy Langlow  
Nini Laube  
Dione Lee  
Linda Lee-Fulmer

Chris Nordfors & Kathryn Lewis  
Kimberly Lind  
John & Debbie Love  
Flor Lozano-Byrne  
Jennifer Maddox  
Maria Marshall  
Kelly Martin  
Jeanette Maxwell  
May Valley Veterinary Services PLLC  
Patricia McCowan  
John Kelly & Courtney McKenzie  
Louise McNulty  
John Dillon & Johanna Melamed  
Susan Miner & Donald Miller  
Kimberly Mitchell  
Bronwynn Mitchelmore  
Ann Molloy  
Margaret Morency  
Margot Nelson  
Kelsey Nicholls  
Eileen O'Connor  
Olson's Tack Shop  
Iris Orriss  
Sally & Larry Otten  
Chris & Vicki Ottesen  
Parkside Stables

PCC Redmond  
Xander Pearce-Brooks  
Susan Preston  
Crystal Prin  
Vicky Pylant  
QIVU Graphics  
Kari Ramadorai  
James & Judy Rams  
Ada Raselli  
Colten Schearer  
Seattle Police Department  
Lori Shufelt  
Mark & Joji Siegel  
Jen Smith  
Kurt & Sharon Soldenwagner  
Daryl & Samia Staehle  
Meredith Staub  
Kaaren Sterlington  
Kara Talbott  
Talking Rain  
Cathy Taylor  
Mark & Liza Taylor  
Sameer & Farhat Tejani  
Jill Todd  
Tina & Alan Torres  
Todd & Tracey Trewin  
Jon Waite  
Amy Wasser  
Timothy & Julie Wen

Kathleen White  
Peter & Stephanie Wieland  
Allen Williams  
Shelly Williams  
Rick Wilson  
Mark & Dolly Woerman  
Judie Young

## Hearts and Hooves Legacy Giving Society

A sentence or two in your will or living trust can help Little Bit achieve its mission for years to come. We thank the following individuals who have remembered Little Bit in their estate plans.



Tucker Burback  
Karol Flynn  
Jerry & Sally Gregg  
Martha Hanscom

Debra Kerr  
Helen Miske  
James & Judy Rams

*Please visit [littlebit.org/donate](http://littlebit.org/donate) to learn more about legacy giving, or to discuss legacy giving opportunities contact Director of Development Sharon Soldenwagner at 425-882-1554.*

# Skip

2017 Little Bit  
Horse of the Year



**Little Bit**  
Therapeutic Riding Center  
Dunmire Stables

- Yes! I want to support Little Bit!
- \$50       \$100       \$150       \$250       \$500
- \$1,000       \$2,500       \$5,000       other \$ \_\_\_\_\_

Donor's Name \_\_\_\_\_

Address \_\_\_\_\_

City \_\_\_\_\_ State \_\_\_\_\_ Zip \_\_\_\_\_

Telephone Home ( \_\_\_\_\_ ) Work ( \_\_\_\_\_ )

Cell ( \_\_\_\_\_ ) Email \_\_\_\_\_

*Little Bit is a 501(c)(3) non-profit organization, making every donation tax deductible as permitted by law.*

- I will donate online at [littlebit.org/donate](http://littlebit.org/donate), or call 425-882-1554.
- My check is enclosed.

Please recognize my donation as follows:

- Anonymous       In honor of \_\_\_\_\_       In memory of \_\_\_\_\_

Please include contact information for honoree/family to receive notice of your gift.

- Please call me to discuss my gift.       Please send me information about including Little Bit in my/our estate plans.
- I have already included Little Bit in my/our estate plans.

# Connect With Us

LITTLE BIT THERAPEUTIC RIDING CENTER  
DUNMIRE STABLES

18675 NE 106th St  
Redmond, WA 98052  
Phone: 425-882-1554



[www.facebook.com/LittleBitTherapeuticRidingCenter](https://www.facebook.com/LittleBitTherapeuticRidingCenter)

## GET INVOLVED

Visit [www.littlebit.org](http://www.littlebit.org) and click on "Get Involved" in the menu or contact us at 425-882-1554.

## PHOTOGRAPHY CREDITS

Terry Alverson Photography: page 18

Jessica Farren Photography: cover

Candi Kintzley Photography &  
Marketing: page 4

Kimberly Lind Photography: page 6,  
16, 28, 38

Win Maynard: page 2

Nitish Meena: page 22

Sugar Sand Photography: page 8

Unknown: page 10, 14, 20

Kara Wallace Photography: page 12

Little Bit has made every effort to accurately reflect all financial contributions received by the organization in 2017. If we have made an error, please accept our sincere apology and contact us so that we can make any necessary corrections. If your address has changed or you would like to be removed from our mailing list, please contact Kristin at 425-882-1554 or [kristin@littlebit.org](mailto:kristin@littlebit.org).